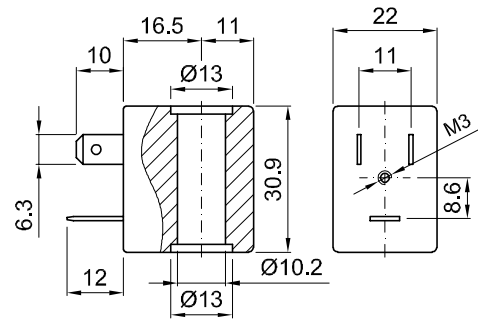


DESCRIPTION

Encapsulated coil incorporating the magnetic circuit.
 Fixing by means of a central nut.
 Electrical connection according to DIN 43650 B.

CONSTRUCTION

Encapsulation:
 Class F Fibre-glass Nylon
 Class H Fibre-glass Polyarylamide
 Magnetic circuit Zinc-plated steel
 Windings Copper covered with
 class H insulation



OPTIONS: Electrical connection through cable
 Special powers and voltages
 Self-extinguish

Certified versions **C RU US** **VDE**

CODE		Alternating current Frequency 50/60Hz Voltage Volt	Direct current Voltage Volt	Power ①		Voltage tolerance		Connector	Service ED
Insulation class F	Insulation class H			Alternating Current VA	Direct Current W	Alternating Current	Direct Current		
30A	32A	12	-	8	6.5	+15%	±10%	10348000	100%
30B	32B	24	-						
30C	32C	48	-						
30D	32D	110	-						
30E	32E	220/230	-						
30F	32F	240	-						
30G	32G	380	-						
300	320	-	12						
301	321	-	24						
302	322	-	48						
-	U35D	120V 60Hz	C RU US						
-	U35E	230V 60Hz							
	V32E	220/230	VDE						

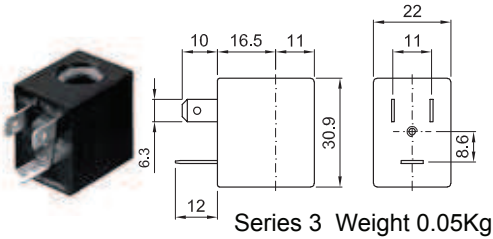
① Considering nominal voltage and an ambient temperature of 20°C



COILS	Direct Current															Electrical connection	Connectors
	3V			6V			9V			12V			24V				
	2W	5W	6.5W	2W	5W	6.5W	2W	5W	6.5W	2W	5W	6.5W	2W	5W	6.5W		
Series 3 Width 22 Code ②	308120			305120	305150		307120	307150		300120	300150	300	301120	301150	301	DIN 46244	PG9 code 10348000

DESCRIPTION
 Class F insulation
 Voltage tolerance $\pm 10\%$
 Protection class
 IP65 with connector fitted
 IP00 without connector
 Continuous service ED100%

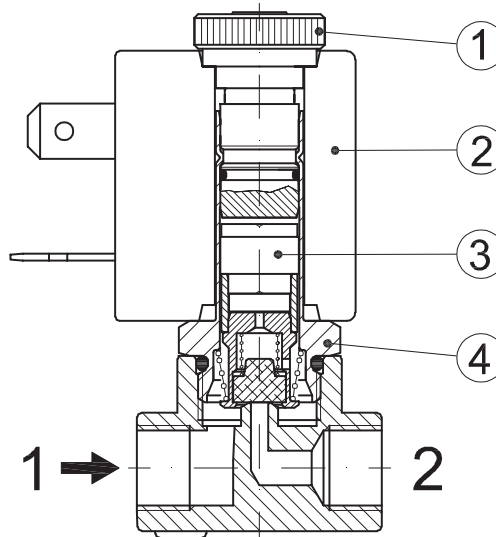
OPTIONS
 Class H insulation
 Cable attached
 Special coil voltage
 Special coil powers



Series 3 Weight 0.05Kg

SPARE PARTS LIST

1. Coil fixing nut
2. Coil
3. Plunger
4. Armature tube with core



OVERALL DIMENSION

